

# ROCK 4

## 1/8 ROCK BASSORUMPUVARIATIOIT -2

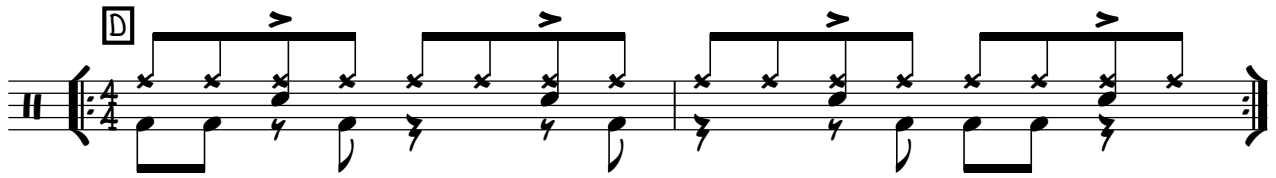
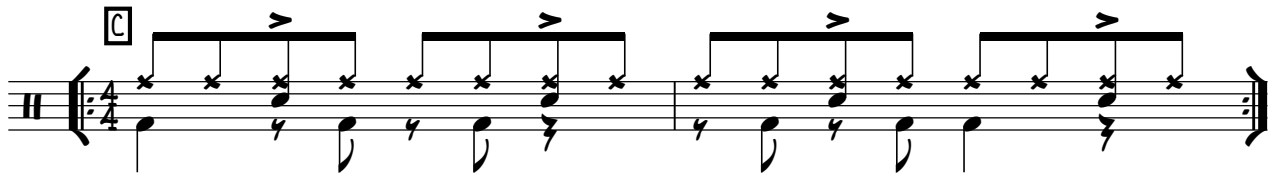
Examples A through J show various rhythmic patterns for the bass drum in 4/4 time. Each example consists of two staves: the top staff shows the drum notation with 'x' marks for hits and the bottom staff shows the corresponding bass line. The patterns are as follows:

- A:** Four groups of eighth notes, each with a hit on the first eighth note.
- B:** Four groups of eighth notes, each with a hit on the first eighth note.
- C:** Four groups of eighth notes, each with a hit on the first eighth note.
- D:** Four groups of eighth notes, each with a hit on the first eighth note.
- E:** Four groups of eighth notes, each with a hit on the first eighth note.
- F:** Four groups of eighth notes, each with a hit on the first eighth note.
- G:** Four groups of eighth notes, each with a hit on the first eighth note.
- H:** Four groups of eighth notes, each with a hit on the first eighth note.
- I:** Four groups of eighth notes, each with a hit on the first eighth note.
- J:** Four groups of eighth notes, each with a hit on the first eighth note.

ESIMERKKEJÄ KAHDEN TAHDIN MITTAISISTA 1/8 ROCK KOMPEISTA:

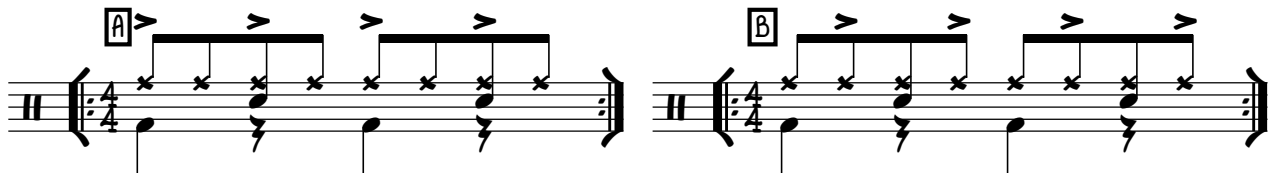
Examples A and B show two measures of rhythmic patterns for the bass drum in 4/4 time. Each example consists of two staves: the top staff shows the drum notation with 'x' marks for hits and the bottom staff shows the corresponding bass line. The patterns are as follows:

- A:** Two measures of eighth notes with hits on the first eighth note of each measure.
- B:** Two measures of eighth notes with hits on the first eighth note of each measure.



### HI-HAT ISKUJEN AKSENTOINTI

KOHDASSA -A PAINOTA NELJÄSOSIA JA KOHDAS -B JÄLKIMMÄISTÄ KAHDEKSASOSANOOTTIA (UPBEATTIA).

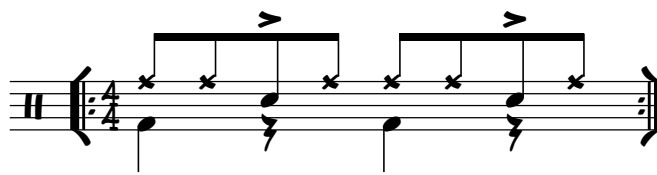


### MUITA 1/8 ROCK -KOMPIN ESITYSTAPOJA

SEURAAVASSA "EXTRONA" MUUTAMA 1/8 ROCK-KOMPIN ORKESTROINTI TAPA, JOTKA ANTAVAT KOMPILLE HIEMAN ERILLAISEN LUUNTEEN. VOIT MYÖS SOITTA NÄIN JO AIEMMIN LÄPIKÄYDYT BASSORUMPUVARIATOT.

#### "CHARLIE WATTS -TYYLII"

LEGENDAARISEN ROLLING STONE YHTYEEN RUMPALI CHARLIE WATTS ON PARHAITEN TUNNETTU TÄSTÄ (KÄSIEN LINEAARISESTA) SOITTOTAVASTA.



#### "JUNA"

HITAAT JA MEDIUM TEMPOT

R R L R R R L R



(MEDIUM JA NOPEAT TEMPOT

R L R L R L R L

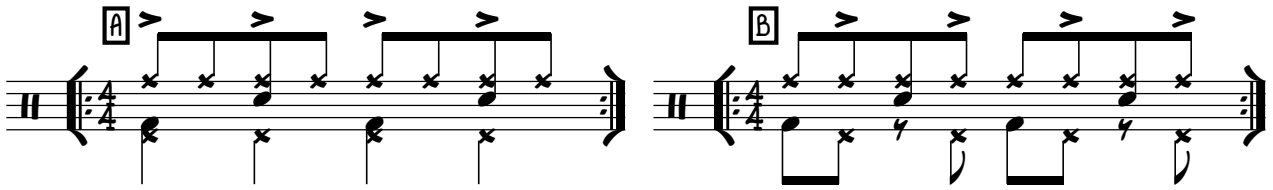


#### LATTIA TOM

OIKEARÄSI LATTIA TOMIIN JA VASEN VIRVELIIN



## HI-HAT PEDAALIN KÄYTTÖ KOMPEISSA



TÄÄS KERRAN SOITA SAMOIN MYÖS MUUT BASSORUMPU VARIATIOT

## HI-HATIN AVAUKSET

o = AVAA HI-HATIN SYMBAALEJA PEDAALILLA, SAMOAN AIKAAN KUN SOITAT NIITÄ KAPULALLA (SYMBAALI JÄÄ SOIMAAN).

+ = SAMMUTA SYMBAALIT PEDAALILLA.

SYMBOOLIT VOIDAAN YHDISTÄÄ TOISIINSA MYÖS KAARELLA, JOKA ILMAISEE SOINNIN KESTOA.



# 1/8 ROCK FILLIT -2

KORO TAHDIN MITTAISET RUMPUFILLI ESIMERKIT.

**A**

**B**

**C**

OMAT VARIATIOIT