

ROCK 4

1/8 ROCK BASSORUMPUVARIATIOIT -2

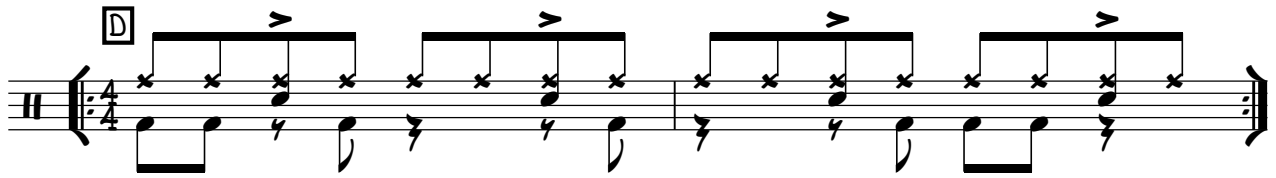
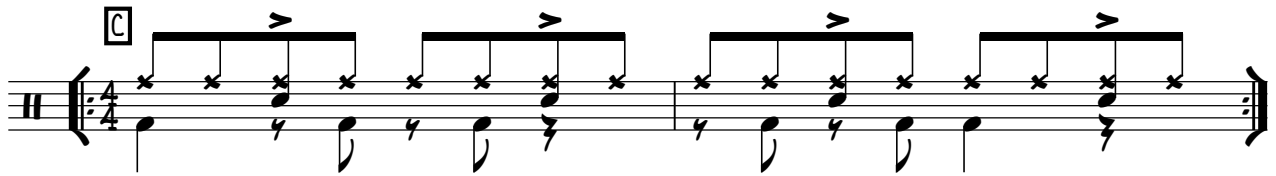
Examples A through J show various 1/8 rock bass drum patterns in 4/4 time. Each example consists of two staves: the top staff shows the bass drum part with 'x' marks indicating hits, and the bottom staff shows the corresponding kick drum part. The patterns are as follows:

- A:** Bass drum hits on 1, 2, 3, 4, 1, 2, 3, 4. Kick drum hits on 1, 2, 3, 4.
- B:** Bass drum hits on 1, 2, 3, 4, 1, 2, 3, 4. Kick drum hits on 1, 2, 3, 4.
- C:** Bass drum hits on 1, 2, 3, 4, 1, 2, 3, 4. Kick drum hits on 1, 2, 3, 4.
- D:** Bass drum hits on 1, 2, 3, 4, 1, 2, 3, 4. Kick drum hits on 1, 2, 3, 4.
- E:** Bass drum hits on 1, 2, 3, 4, 1, 2, 3, 4. Kick drum hits on 1, 2, 3, 4.
- F:** Bass drum hits on 1, 2, 3, 4, 1, 2, 3, 4. Kick drum hits on 1, 2, 3, 4.
- G:** Bass drum hits on 1, 2, 3, 4, 1, 2, 3, 4. Kick drum hits on 1, 2, 3, 4.
- H:** Bass drum hits on 1, 2, 3, 4, 1, 2, 3, 4. Kick drum hits on 1, 2, 3, 4.
- I:** Bass drum hits on 1, 2, 3, 4, 1, 2, 3, 4. Kick drum hits on 1, 2, 3, 4.
- J:** Bass drum hits on 1, 2, 3, 4, 1, 2, 3, 4. Kick drum hits on 1, 2, 3, 4.

ESIMERKKEJÄ KAHDEN TAHDIN MITTAISISTA 1/8 ROCK KOMPEISTA:

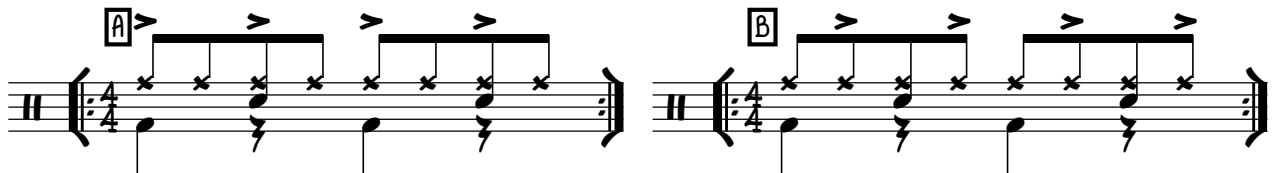
Examples A and B show two measures of 1/8 rock bass drum patterns in 4/4 time. Each example consists of two staves: the top staff shows the bass drum part with 'x' marks indicating hits, and the bottom staff shows the corresponding kick drum part. The patterns are as follows:

- A:** Bass drum hits on 1, 2, 3, 4, 1, 2, 3, 4. Kick drum hits on 1, 2, 3, 4.
- B:** Bass drum hits on 1, 2, 3, 4, 1, 2, 3, 4. Kick drum hits on 1, 2, 3, 4.



HI-HAT ISKUJEN AKSENTOINTI

KOHDASSA -A PAINOTA NELJÄSOSIA JA KOHDAS -B JÄLKIMMÄISTÄ KAHDEKSASOSANUOTTIA (UPBEATTIA).

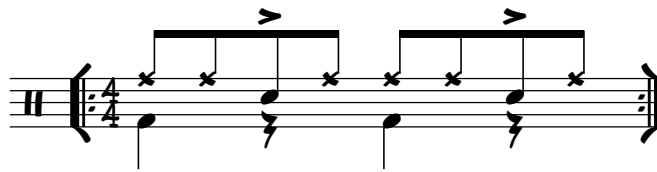


MUITA 1/8 ROCK -KOMPIN ESITYSTAPOJA

SEURAAVASSA "EXTRONA" MUUTAMA 1/8 ROCK-KOMPIN ORKESTROINTI TAPA, JOTKA ANTAVAT KOMPILLE HIEMAN ERILLAISEN LUONTEEN. VOIT MYÖS SOITTA NÄIN JO AIEMMIN LÄPIKÄYDYT BASSORUMPUVARIATOT.

"CHARLIE WATTS -TYYLII"

LEGENDAARISEN ROLLING STONE YHTYEEN RUMPALI CHARLIE WATTS ON PARHAITEN TUNNETTU TÄSTÄ (KÄSIEN LINEAARISESTA) SOITTOTAVASTA.



"JUNA"

HITAAT JA MEDIUM TEMPOT

R R L R R R L R



(MEDIUM JA NOPEAT TEMPOT

R L R L R L R L

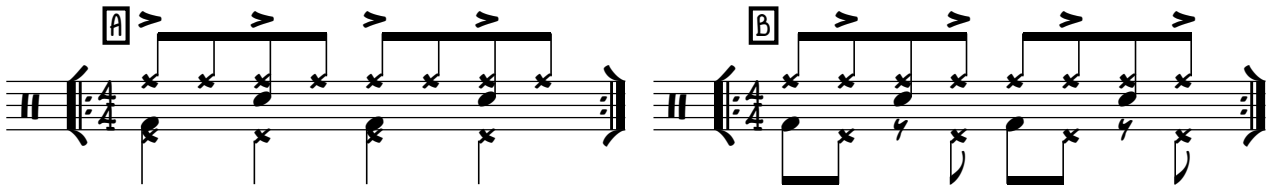


LATTIA TOM

OIKEARÄSI LATTIA TOMIIN JA VASEN VIRVELIIN



HI-HAT PEDAALIN KÄYTTÖ KOMPEISSA



TÄÄS KERRAN SOITA SAMOIN MYÖS MUUT BASSORUMPU VARIAATIOIT

HI-HATIN AVAUKSET

o = AVAA HI-HATIN SYMBAALEJA PEDAALILLA, SAMOAN AIKAAN KUN SOITAT NIITÄ KAPULALLA (SYMBAALI JÄÄ SOIMAAN).

+ = SAMMUTA SYMBAALIT PEDAALILLA.

SYMBOOLIT VOIDAAN YHDISTÄÄ TOISIINSA MYÖS KAARELLA, JOKA ILMAISEE SOINNIN KESTOA.



1/8 ROCK FILLIT -2

KORO TAHDIN MITTAISET RUMPUFILLI ESIMERKIT.

A

Musical notation for exercise A, first system. It shows a drum set in 4/4 time with a bass drum line and a snare line. The snare line features eighth-note patterns with accents and 'x' marks above notes. The bass drum line has quarter notes and eighth notes.

B

Musical notation for exercise B, first system. Similar to exercise A, but with different snare patterns. The snare line includes eighth-note patterns with accents and 'x' marks, and some notes with circles above them.

C

Musical notation for exercise C, first system. Similar to exercise A, but with different snare patterns. The snare line includes eighth-note patterns with accents and 'x' marks, and some notes with circles above them.

OMAT VARIATIOIT

Two empty musical staves for drum notation, one for the snare and one for the bass drum, in 4/4 time.